

DEVELOPED BY:

AVENTURA DEVELOPERS LIMITED



# AVENTURA HOMES

---

PROPOSED TOWNHOUSES AT  
EAST LEGON HILLS.

*A Serene Gated Community*

# CONTENTS

1. Introduction
  - Location & Site information
  - Brief and Amenities
2. Architecture
  - Master Plan
  - Floor Plan Layouts
  - Materials Palette
  - Impressions
3. Project
  - Payment Terms
4. Company information

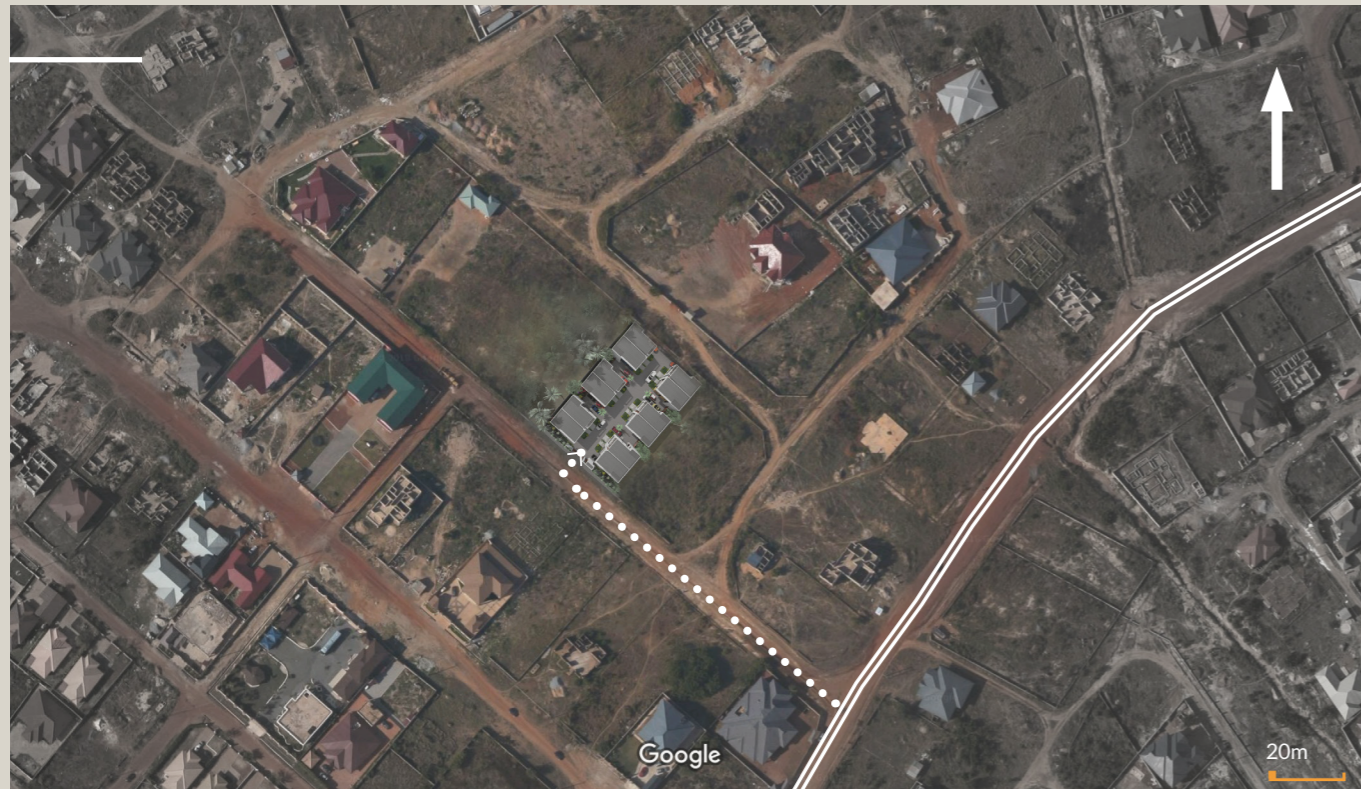


## INTRO

These well-crafted contemporary homes were created with 2 floors, with balconies on the first floor. In a luxurious private area in East Legon Hills.

Each unit includes 4 bedrooms [one on the ground floor and 3 on the first floor], kitchen, living and dining rooms. Residents will enjoy outdoor space with terraces and back gardens in each home, offering a relaxing respite any time of day or night —a rare treat in such a thriving metropolis.

Palm tree lined streets welcome residents home as they pull directly up to their semi-detached homes. The eclectic colour palette is warm and inviting and provides a unique contrast to the contemporary aesthetic of each building's streamlined design.



Aventura Homes occupies a land area of 0.63 acres and is located at East Legon Hills near Quarthey Papafio Hills, in Greater Accra region.

The neighborhood is quiet but still maintains proximity to the city centre. Thanks to the redesign and ongoing reconstruction of the existing road to make it a dual carriage road, transportation from the site to Adjiringanor will be greatly improved.

Also, close to Aventura Homes is British International School which is one of the top-notch private schools in Accra.

Aventura Homes offers a contemporary, upscale alternative to the traditional low-rise apartment buildings that are common in the East Legon Hills area.





*Aventura  
Homes*

# BRIEF

## Aventura Homes



### TOWNHOUSES

12 HOMES

4 Bedroom semi-detached townhouses, each with 2 parking spaces and a visitor's parking.

Welcomed with a tree lined avenue



24/7 SECURITY MONITORED



ON SITE PARKING SPACES



WASTE COLLECTION



COMPOUND CLEANING SERVICES



LANDSCAPED AREAS & TREE-LINED AVENUES



TERRACE FOR LEISURE



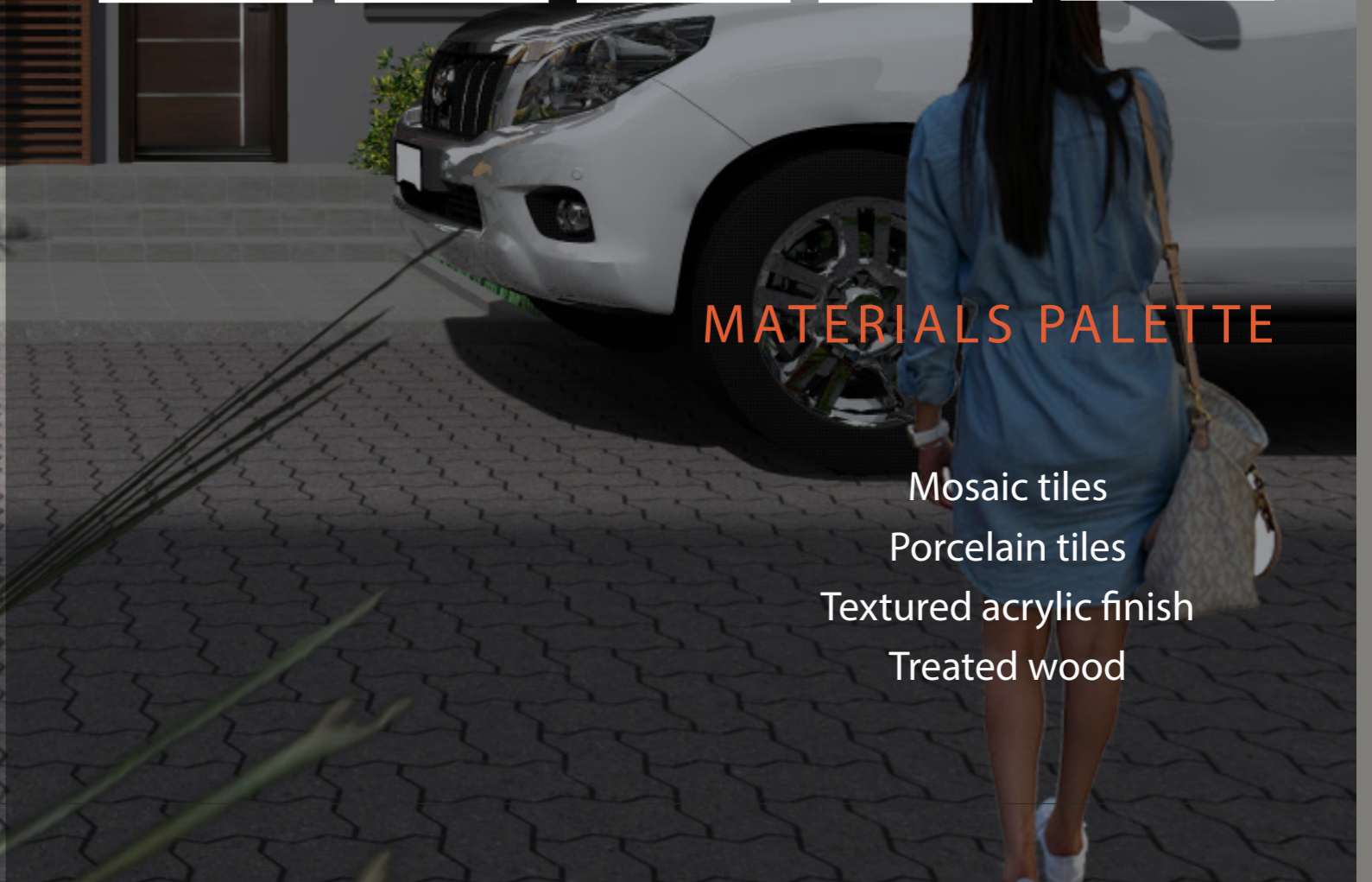
ROOFTOP FOR WATER STORAGE

## AMENITIES



MATERIALS PALETTE

- Mosaic tiles
- Porcelain tiles
- Textured acrylic finish
- Treated wood



FRONT VIEW



ENTRANCE FOYER

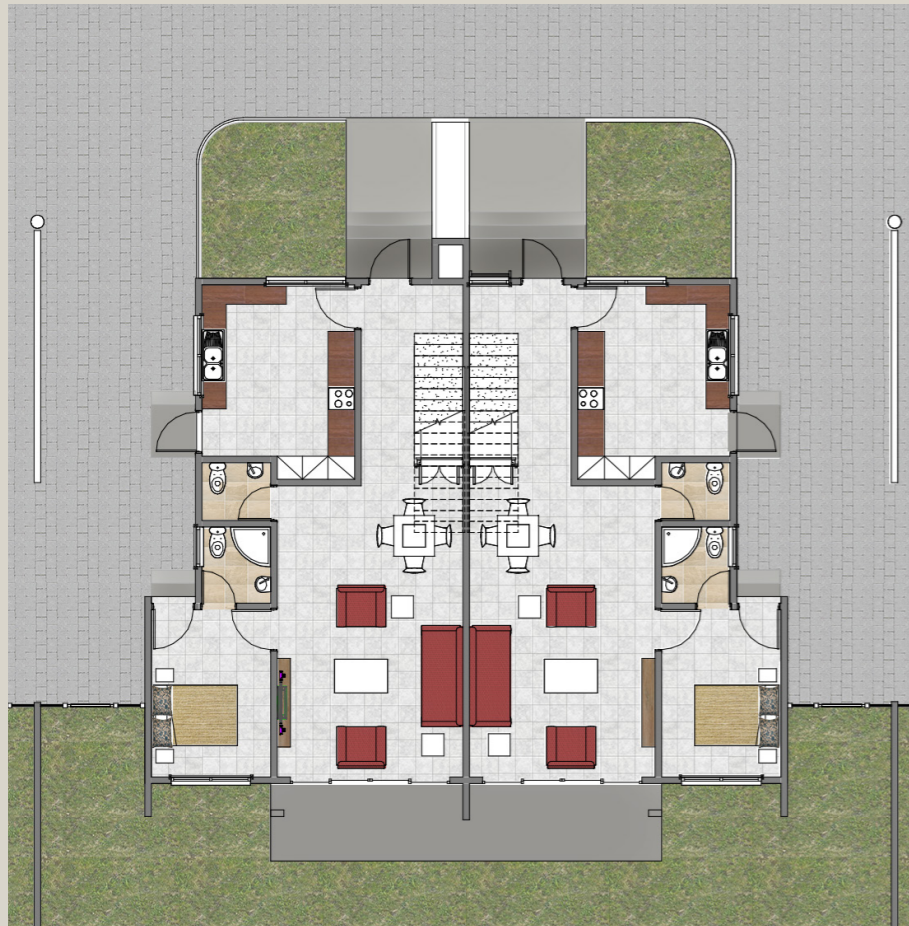




DRIVE IN / OUT



# TYPICAL GROUND FLOOR PLAN



## Areas

Entrance Terrace	2m <sup>2</sup>
Lobby	9m <sup>2</sup>
Kitchen	14m <sup>2</sup>
Dining Area	10m <sup>2</sup>
Living room	20m <sup>2</sup>
Guest w/r	2m <sup>2</sup>
Guest/Steward's Quarters	13m <sup>2</sup>
Back Terrace	7m <sup>2</sup>





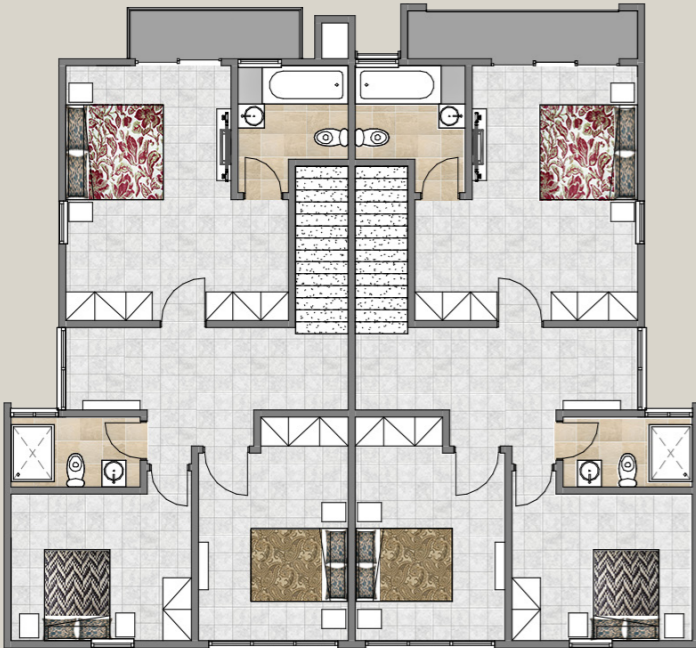
DINING AREA

# KITCHEN INSTALLATION



# TYPICAL FIRST FLOOR PLAN

## Areas



Master Bedroom	21m <sup>2</sup>
Master Bathroom	5m <sup>2</sup>
Balcony	3m <sup>2</sup>
Utility Area	16m <sup>2</sup>
Bedroom 1	14m <sup>2</sup>
Bedroom 2/ Study	12m <sup>2</sup>
Shared Bathroom	4m <sup>2</sup>



# MASTER BEDROOM DESIGN



# BATHROOM DESIGN



Modernist bathroom design with porcelain mosaic tiles

LIVING ROOM



MASTER BEDROOM



PARKING & GARDEN



PARKING & GARDEN



# PAYMENT TERMS

**DEVELOPED BY:**  
AVENTURA DEVELOPERS LIMITED  
+233 24 293 3233  
+233 54 342 7421  
info@aventuradev.com

**CONSULTANTS:**



**arc-AURA**  
ARCHITECTS  
P.O.BOX YK828 KANDA, ACCRA  
[www.arcauragh.net](http://www.arcauragh.net)  
[info@arcauragh.net](mailto:info@arcauragh.net)  
Tel: +233-244022233

\$

%



The sale price of each house is **\$ 255,000** [subject to change]

A **30%** down payment allows the balance to be spread over **six (6) months**, with property completion guaranteed within six (6) months of the down payment

You could be a proud owner of an **Aventura Home**. Mortgages available from Ghana Home Loans and other mortgage providers



**AVENTURA HOMES**





**AVENTURA HOMES**